

MLS Area 8W

Residential Statistics

Independence Title

September 2021

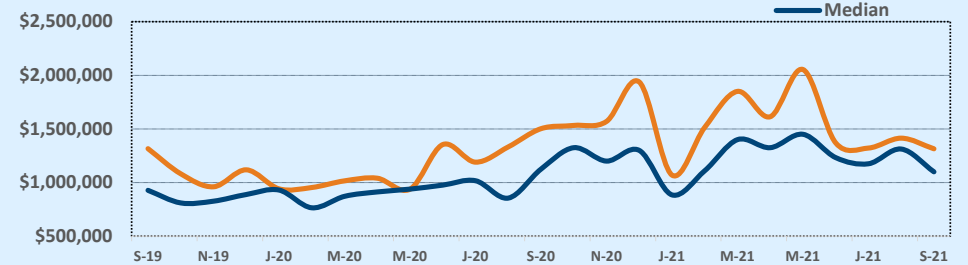
Listings	This Month			Year-to-Date		
	Sep 2021	Sep 2020	Change	2021	2020	Change
Single Family Sales	16	27	-40.7%	155	171	-9.4%
Condo/TH Sales	2	--	--	11	5	+120.0%
Total Sales	18	27	-33.3%	166	176	-5.7%
New Homes Only	1	--	--	2	4	-50.0%
Resale Only	17	27	-37.0%	164	172	-4.7%
Sales Volume	\$23,662,327	\$40,557,651	-41.7%	\$247,807,696	\$212,051,604	+16.9%
New Listings	13	20	-35.0%	189	234	-19.2%
Pending	5	25	-80.0%	12	198	-93.9%
Withdrawn	3	2	+50.0%	16	23	-30.4%
Expired	--	--	--	1	9	-88.9%
Months of Inventory	0.8	1.0	-13.5%	N/A	N/A	--

Average	This Month			Year-to-Date		
	Sep 2021	Sep 2020	Change	2021	2020	Change
List Price	\$1,275,217	\$1,542,552	-17.3%	\$1,445,842	\$1,227,332	+17.8%
List Price/SqFt	\$449	\$401	+12.2%	\$508	\$344	+47.4%
Sold Price	\$1,314,574	\$1,502,135	-12.5%	\$1,492,817	\$1,204,839	+23.9%
Sold Price/SqFt	\$463	\$390	+18.6%	\$514	\$339	+51.9%
Sold Price / Orig LP	103.3%	96.4%	+7.2%	103.4%	97.6%	+6.0%
Days on Market	10	34	-71.4%	17	34	-50.4%

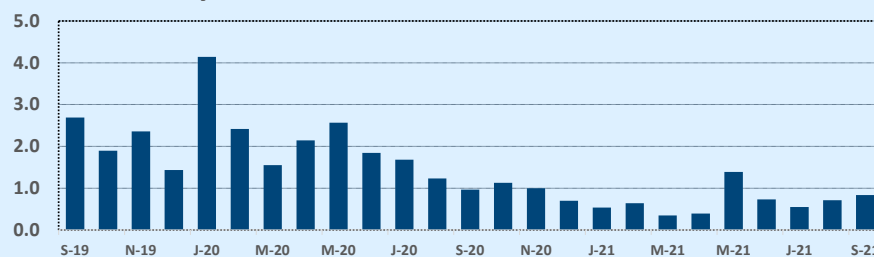
Median	This Month			Year-to-Date		
	Sep 2021	Sep 2020	Change	2021	2020	Change
List Price	\$1,095,000	\$1,149,000	-4.7%	\$1,150,000	\$897,450	+28.1%
List Price/SqFt	\$412	\$328	+25.5%	\$396	\$296	+33.6%
Sold Price	\$1,100,000	\$1,125,000	-2.2%	\$1,246,750	\$912,500	+36.6%
Sold Price/SqFt	\$412	\$311	+32.5%	\$413	\$294	+40.3%
Sold Price / Orig LP	100.0%	95.0%	+5.3%	102.5%	98.0%	+4.6%
Days on Market	5	18	-72.2%	6	12	-50.0%

Price Range	This Month			Year-to-Date		
	New	Sales	DOM	New	Sales	DOM
\$149,999 or under	--	--	--	--	--	--
\$150,000- \$199,999	--	--	--	--	--	--
\$200,000- \$249,999	--	--	--	--	--	--
\$250,000- \$299,999	--	--	--	--	1	7
\$300,000- \$349,999	--	--	--	--	--	--
\$350,000- \$399,999	1	1	2	4	4	11
\$400,000- \$449,999	--	--	--	1	1	4
\$450,000- \$499,999	--	--	--	5	1	3
\$500,000- \$549,999	--	2	8	5	6	16
\$550,000- \$599,999	--	--	--	4	3	2
\$600,000- \$699,999	3	1	6	14	11	10
\$700,000- \$799,999	--	2	6	16	11	21
\$800,000- \$899,999	--	--	--	12	11	11
\$900,000- \$999,999	--	2	14	16	11	22
\$1M - \$1.99M	6	7	10	75	76	16
\$2M - \$2.99M	1	2	4	18	16	11
\$3M+	2	1	31	19	14	39
Totals	13	18	10	189	166	17

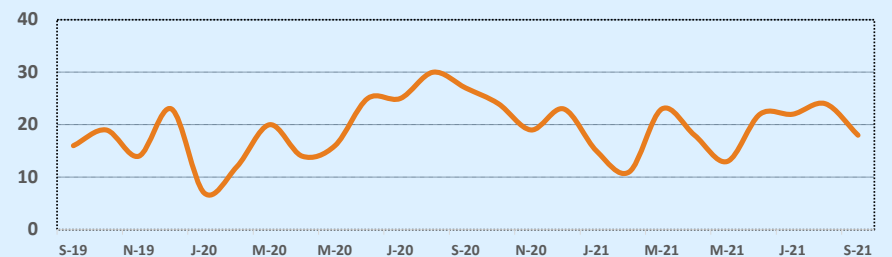
Average & Median Sales Price - Last Two Years



Months of Inventory - Last Two Years



Number of Sales - Last Two Years



Based on information from the Austin Board of REALTORS® (alternatively, from ACTRIS). Neither the Board nor ACTRIS guarantees or is in any way responsible for its accuracy. The Austin Board of REALTORS®, ACTRIS and their affiliates provide the MLS and all content therein "AS IS" and without any warranty, express or implied. Data maintained by the Board or ACTRIS may not reflect all real estate activity in the market.